



Porsche Cayman 981 Oil Change

Step-by-step instructions on how to change the oil in a Porsche.

Written By: Danielle



INTRODUCTION

Learn how to change the oil in a Porsche.



TOOLS:

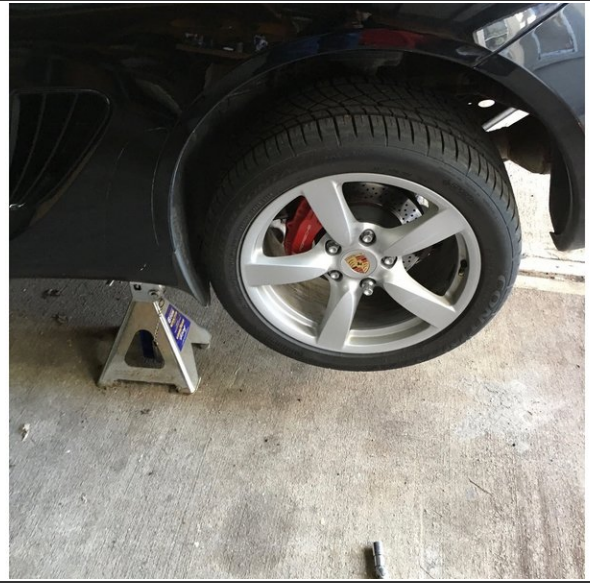
- [Low Profile Oil Drain Pan](#) (1)
- [3/8" Torque Wrench](#) (1)
- [Oil Filter Socket \(74mm 14 Flute\)](#) (1)
- [3/8" Extension Set](#) (1)
- [3/8" Ratchet](#) (1)
- [Nitrile Disposable Gloves](#) (1)
- [Oil Funnel](#) (1)
- [Jack Stands](#) (1)
- [Low Profile Jack](#) (1)
- [JackPad](#) (1)



PARTS:

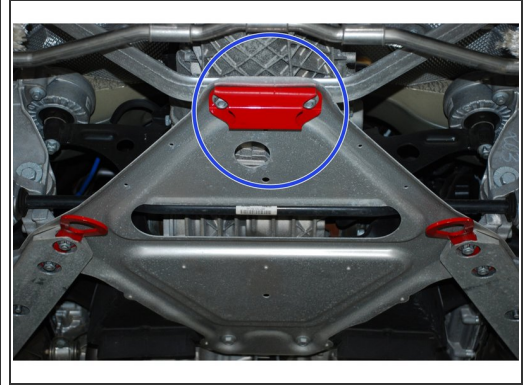
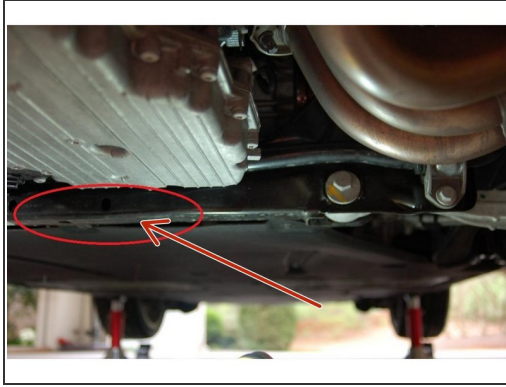
- [Mobil 1 0w40 Oil](#) (8)
Factory Fill
- [Mobil 1 5W40 Oil](#) (8)
Optional Weight
- [Mobil 1 5w50 Oil](#) (8)
Optional Weight
- [MAHLE Original OX 366D Oil Filter](#) (1)
Filter and O-Ring
- [Crush Washer](#) (1)

Step 1 — Lifting Front of Vehicle



- Using one of the REAR factory jack points. Jack up vehicle and place a jack stand under the front jack points.
 - Carefully position the jack stand to correctly contact that jack point of the vehicle
 - Repeat this procedure on opposite side of vehicle.
- ⓘ The Porsche Factory jack points are designed for pin top style jack pads. While a normal jack will work, the pin top ones are the safest to use and safest for the vehicle.

Step 2 — Placing Rear of Vehicle on Jack Stands



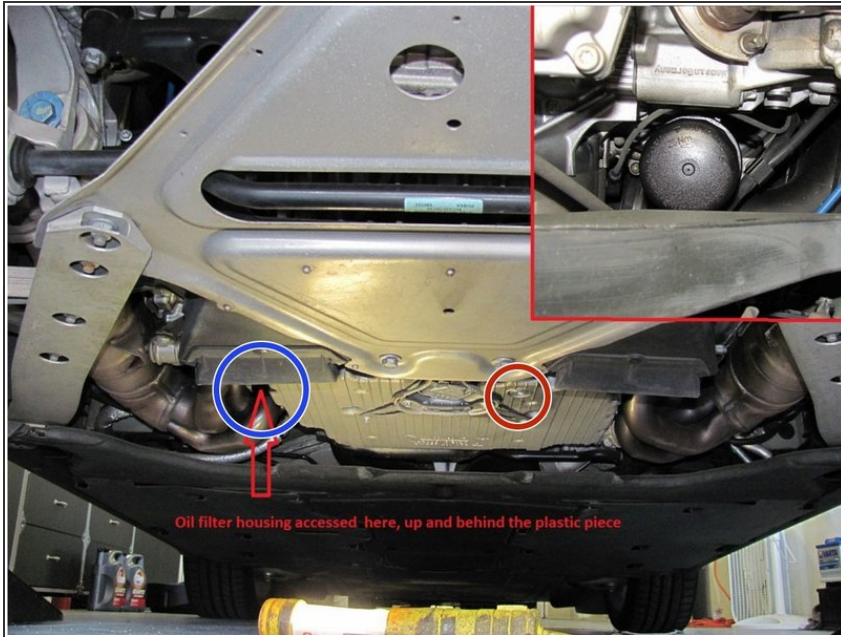
- Using a low profile jack, center the jack directly in front of the engine and using chassis cross member, lift vehicle and place jack stands on rear jack points.
- Photo #1 is 991 Cross Member
- Photo #2 is 997.2 Cross Member
- Photo 3 Shows a Cayman/Boxster rear jack point with optional jacking block.

Step 3



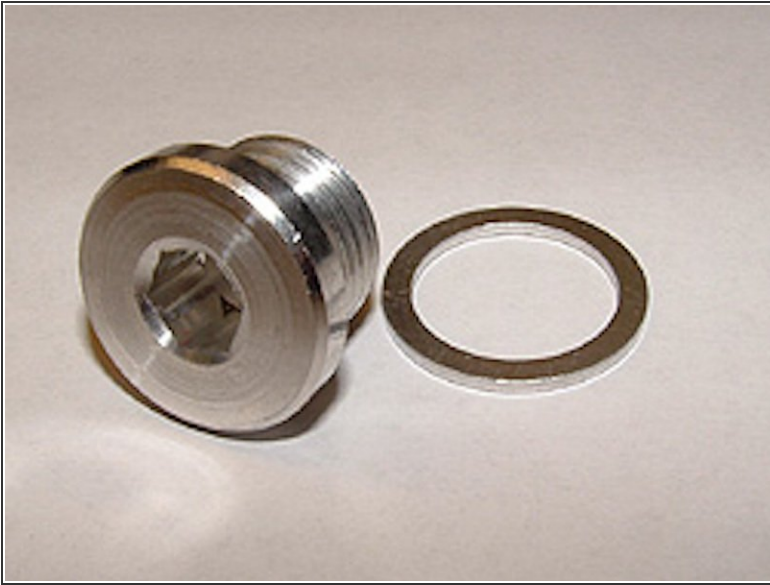
- Place a solid jack stand under the 4 jack points located near each respective wheel.

Step 4 — Location of the Drain Plug and Oil Filter Cover




- Here is a general concept of where the oil filter cover as well as the drain plug are located. This photo was taken from the back of the vehicle facing forwards. The picture shows the positioning of the drain plug.
- Oil Drain
- Oil Filter Housing

Step 5 — Remove Drain Plug

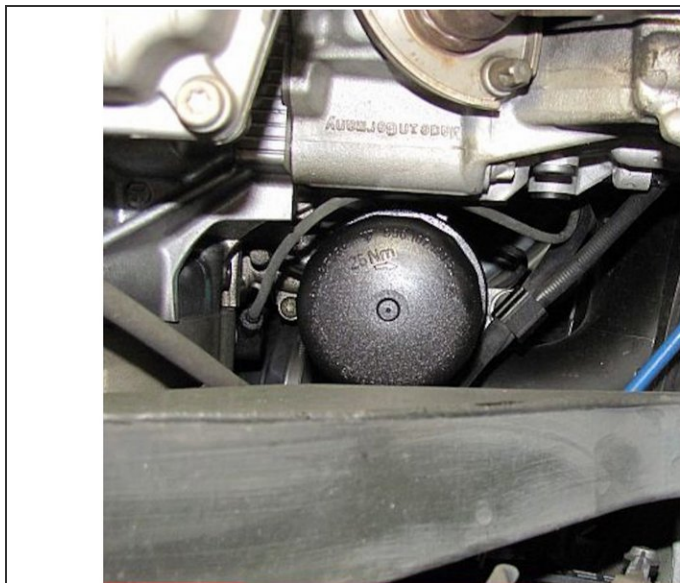


- Using 8mm Hex Socket, remove drain plug
- Open Oil Filler in Trunk compartment to allow oil to drain faster.
- Let oil drain for at least one hour.

 Replace old Crush washer with new one from Oil Filter Kit

 Oil will be hot, use caution!

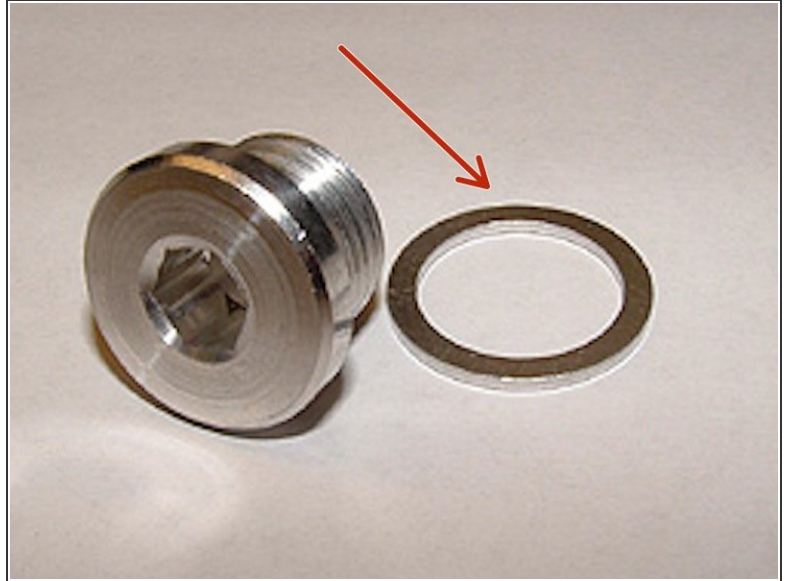
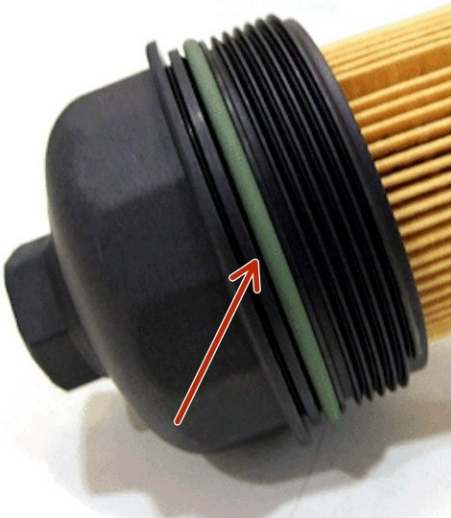
Step 6 — Replacing the Oil Filter



- Use 14 Flute Oil Filter Cap Removal tool to loosen Plastic Filter Cap
- Once the oil filter cover is loose, set a plastic bag on the oil filter cover and take away the oil filter cover.

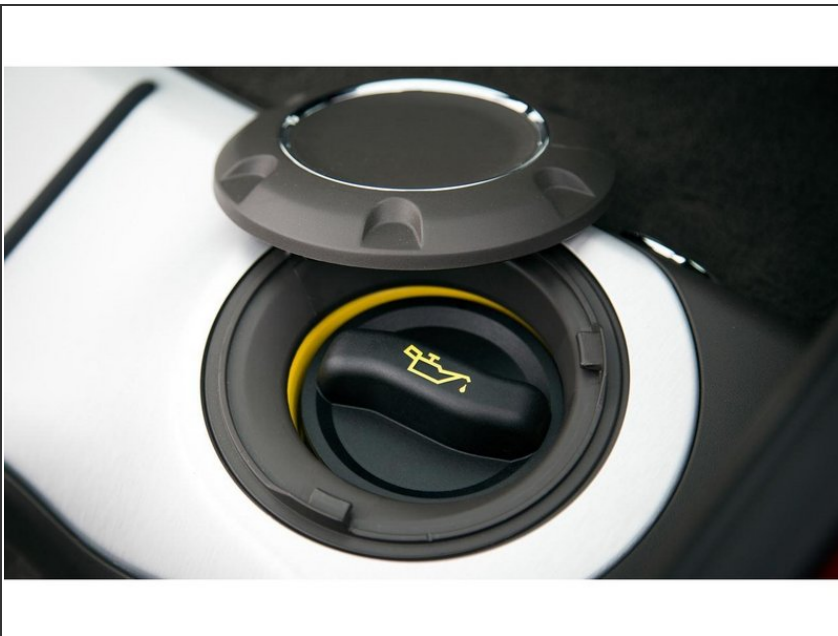
 **Note:** Be cautious when sliding your arm in.

Step 7 — Replace Oil Filter Cap O-Ring



- Replace the O-Ring with a new one from the Oil Filter Kit.
- Install New Filter and Tighten Cap to 19 ft/lb
- Reinstall Drain Plug with new crush washer and tighten to 37 ft/Lb

Step 8 — Refill Oil



- Cayman Oil Filler Cap is located on right side of trunk.
- Factory recommends 7.5L or Approximately 8 Qts of oil is required.

⚠ Lay towels around filler cap to prevent damage to interior.

