



# Porsche 997.2 Carrera Oil Change

This guide will describe the steps involved in performing an oil change on the Porsche 997.2 Engine.

Written By: DriveDIY



## INTRODUCTION

This guide will describe the steps involved in performing an oil change on the Porsche 997.2 DFI Engine.

## Applicable Models

- 997.2 Carrera / Carrera 4
- 997.2 Carrera S / Carrera 4S
- 997.2 Targa 4 / Targa 4S
- 997.2 GTS

Credit 6SpeedOnline Member CerboMark



### TOOLS:

- [Low Profile Oil Drain Pan](#) (1)
- [36mm Socket](#) (1)
- [8mm Allen head Socket](#) (1)
- [3/8" Ratchet](#) (1)
- [3/8" Extension Set](#) (1)
- [3/8" Torque Wrench](#) (1)
- [Nitrile Disposable Gloves](#) (1)
- [Oil Funnel](#) (1)



### PARTS:

- [Mobil 1 0w40 Oil](#) (8)  
0W40 is the factory installed oil in North America  
*\*Porsche Approved Oil\**
- [Mobil 1 5W40 Oil](#) (8)  
*Optional*
- [Mobil 1 5w50 Oil](#) (8)  
*Optional \*High Heat Protection , perfect for track use\**
- [Oil Filter Kit](#) (1)
- [Motul Xcess 8100 5w40](#) (1)

## Step 1 — Warm Up Vehicle



- To ensure all the oil will properly drain, bring the car to operating temperature and then turn off vehicle.
- Water Temp should be around 175 F

## Step 2 — Place Drain Pan Under Oil Drain



- Depending on the oil pan you purchased. Some will fit without raising the vehicle.
- ① For Extra clearance, I recommend rolling both rear wheels onto a 2x4" piece of wood for additional clearance.
- Photo Shows the Location of the Oil Drain Plug

### Step 3 — Open Oil Drain Plug



- Using 8mm Allen Socket , loosen the drain plug.
- Allow oil to drain for approximately 30 - 60min
- ❗ Open Fill Nozzle to help system drain faster

⚠ Oil & Surrounding exhaust system is **EXTREMELY HOT!**

### Step 4 — Remove Oil Filter in Engine Compartment



- Using 36mm socket, carefully loosen oil filter housing cap.
- Remove Filter and clean housing with a rag.
- Clean Filter Housing Cap and discard O-Ring



## Step 5 — Re-Install Drain Plug with New Crush Washer



- Always use a new Crush Washer
- ⓘ Tighten Drain Plug to 37 ft/Lb

## Step 6 — Insert New Filter and O-Ring



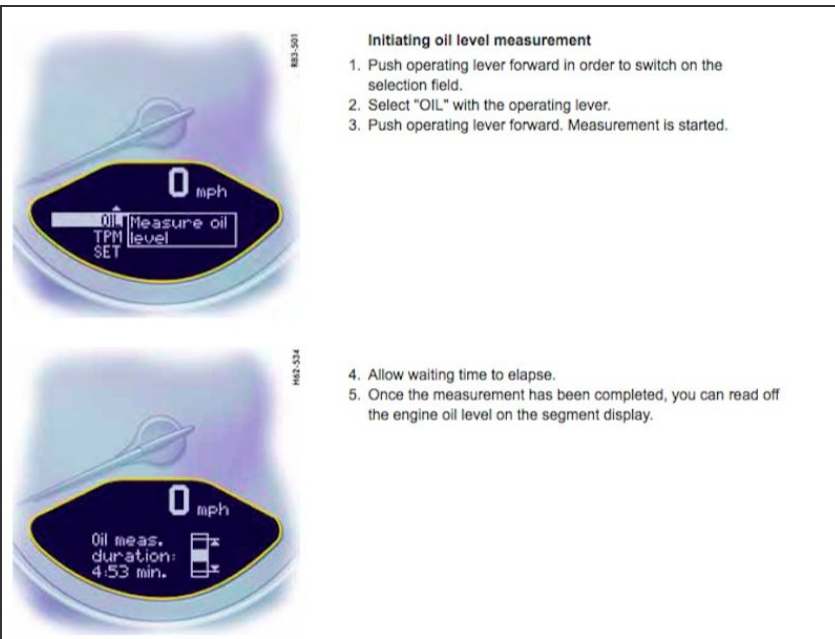
- Install New Oil Filter and Oil Filter Housing O Ring
- Lightly lubricate O-Ring with clean oil
- ⓘ Tighten Plastic Cap to 19 ft/lbs

## Step 7 — Add Fresh Oil




- Add 7 Quarts of fresh oil, close filler cap and start engine.
- ⓘ Oil change quantity with oil filter approx. 7.9 quarts / 7.5 liters

## Step 8 — Check Oil Level - fill to correct level



- Conditions for measuring the oil level Vehicle stationary. It is important to ensure that the vehicle is horizontal for correct oil level measurement to occur. Engine must be at operating temperature (at least 140 °F/60 °C). Engine must be idling.
- Add oil in small increments until measurement is shown between normal operating range.

 Each box on dash display represents .42quarts of oil

 **Do not over fill!**

## Step 9 — Dispose of old oil in accordance to local government regulations.



 Most autoparts stores accept old oil.